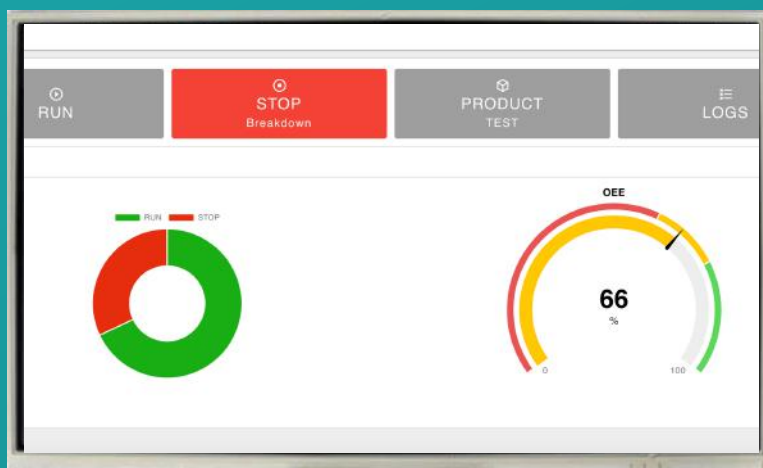




HMI

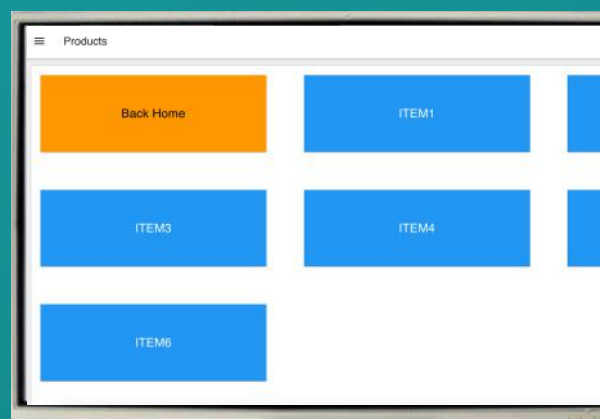


Benefits

- Seamless integration of Manufacturing IOT edge sensors
- Hardware vendor agnostic
- Multi Communication protocol
- AWS Cloud-based, secure data management with on-machine status display
- Management Status Dashboard local and remotely accessible

Features

- 3 x Analog Outputs
- 3 x Digital Inputs
- 3 x Digital Inputs
- 3 x Relays 24V DC 2A
- WiFi, Bluetooth, LAN
- RS485 Modbus
- Secure token based encryption
- Multi voltage support 9-36V



IOT Portal Management

- | | | | |
|----------|-----------|-----------------|------------|
| • Users | • Devices | • Communication | • GEO maps |
| • Sites | • Rules | • Reports | • Workflow |
| • Assets | • BI | • Automation | |

